

Post Results Services

GCE

Summer 2017



## CCEA Post Results Services – June 2017 Examinations Series



**Enquiry About Results – Services Available, Charges and Closing Dates for June 2017 Examinations.**

Please note that the charges for Services 1, 2 and Priority 2 are for each script (paper) requested and not for all the scripts in a subject.

A fee will not be charged if the Enquiry results in a change to an overall subject grade when a candidate has cashed-in or if the Enquiry results in a change to the notional unit grade when a candidate has not cashed-in.

Service Number	Service Description	Closing Dates	Key Skills	GCSE Linear & Modular Terminal	GCSE Modules/ Units	GCE Modules/ Units
1	<b>Clerical re-check</b> A clerical re-check and a statement of marks for the component/unit.	21 Sept 2017	£8.50	£8.50	£8.50	£8.50
2	<b>Review of Marking by Component/Unit (i.e. by script/paper)</b> A review of marking of an externally assessed component (i.e. a script or other assessed item) for an individual candidate, including a clerical re-check and a breakdown of marks for that component/unit. A photocopy of the reviewed script will be available on request. The fee for a photocopied script is indicated below.	21 Sept 2017	£22.00 (Level 3 only)	£24.30	£18.45	£24.30
Priority 2	<b>Priority Review of Marking by Component/Unit (i.e. by script/paper)</b> Priority review of marking of an externally assessed component/unit (i.e. a script or other assessed item) for an individual candidate, including a clerical re-check and breakdown of marks for that component/unit. A photocopy of the reviewed script will be available on request. The fee for a photocopied script is indicated below. Candidates are advised to apply for this service only if a place in higher education is dependent on the outcome. We strongly recommend that centres request this service as soon as possible following the issue of results so that re-marks can be completed in time to meet UCAS admissions deadlines.	24 Aug 2017	N/A	N/A	N/A	£36.55
3	<b>Review of Moderation of Centre Coursework/Controlled Assessment</b> A review of moderation of the centre's original coursework/controlled assessment sample for a centre assessed component, with feedback on the assessment of the candidate's work.	21 Sept 2017	N/A	£131.35	£131.35	£131.35

**Access to Scripts – Services, Closing dates and Charges.** When requesting Access to Scripts, candidates should note that CCEA's quality assurance checks on scripts before despatch may result in a change of mark. This means that the marks can go up as well as down. Candidates should be made aware of this before signing the request form.

Description of Service	Closing Dates	Issued to centres by	Charges payable
Access to copy of a script before a review of marking – only available for GCE subjects Service 2.	24 August 2017	7 September 2017	£8.50
Access to copy of scripts before a review of marking – only available for GCSE English Language and Mathematics.	31 August 2017	7 September 2017	£8.50
Access to copy of candidate assessment forms before a review of marking – only available for AS/A2 Music Unit 1 and Performing Arts Unit 2 assignments. Cannot be provided before priority review of marking.	8 September 2017	29 September 2017	£2.50
Access to copy of reviewed script after a review of marking – available for GCSE and GCE papers – must be applied for as part of Enquiry Service 2 or Priority Service 2.	24 August 2017 (Priority Service 2)	6 November 2017	£8.50
	21 September 2017 (Service 2)		
Access to original script – available for GCSE and GCE.	28 September 2017	8 November 2017	£6.30

Revised AS Subject Level Uniform Mark Grade Boundaries: 1st Award Summer 2017  
(AS units account for 40% of total A Level)


2 unit AS Max Uniform Marks: 120	
Grade	UMS Boundaries
A	96
B	84
C	72
D	60
E	48
<b>Subjects:</b>	
AS History (S4014)	

2 unit AS Max Uniform Marks: 160	
Grade	UMS Boundaries
A	128
B	112
C	96
D	80
E	64
<b>Subjects:</b>	
AS Art and Design (S3514 opts A to D)	AS Journalism (S0932)
AS Business Studies (S3214)	AS Moving Image Arts (S5355)
AS Digital Technology (S2656)	AS Nutrition & Food Science (S3314)
AS Economics (S4414)	AS Performing Arts (S0912)
AS English Literature (S5114)	AS Religious Studies (S4614)
AS Environmental Tech (S0342)	AS Software Systems (S0612)
AS Govt & Politics (S4834)	AS Sports Science (S0812)
AS History of Art (S3834)	AS Tech & Design (S8904)

3 unit AS Max Uniform Marks: 200	
Grade	UMS Boundaries
A	160
B	140
C	120
D	100
E	80
<b>Subjects:</b>	
AS French (S5654)	
AS Geography (S3914)	
AS German (S5674)	
AS Irish (S5554)	
AS Spanish (S5754)	

3 unit AS Max Uniform Marks: 240	
Grade	UMS Boundaries
A	192
B	168
C	144
D	120
E	96
<b>Subjects:</b>	
AS Biology (S1014)	
AS Chemistry (S1114)	
AS Music (S7014)	
AS Physics (S1214)	
AS Applied Business Single Award (S9205)	
AS Applied ICT Single Award (S9905)	
AS Health & Social Care Single Award (S9805)	
AS Life & Health Sciences Single Award (S8001)	

6 unit Double Award AS Max Uniform Marks: 480	
Grade	UMS Boundaries
AA	384
AB	360
BB	336
BC	312
CC	288
CD	264
DD	240
DE	216
EE	192
<b>Subjects:</b>	
AS Applied Business Double Award (S9207)	
AS Applied ICT Double Award (S9907)	
AS Health & Social Care Double Award (S9807)	
AS Life & Health Sciences Double Award (S8002)	


 <i>Rewarding Learning</i>		<b>AS Unit Uniform Mark Boundaries revised specifications: Summer 2017</b> <b>(AS units contribute 40% of total A Level uniform mark)</b>							
Level	Subject and Unit	Unit Code	Unit Weighting	Maximum Uniform Mark	UMS Grade Boundaries				
					A	B	C	D	E
AS	Art and Design Unit 1	SAR1	20%	80	64	56	48	40	32
AS	Art and Design Unit 2	SAR2	20%	80	64	56	48	40	32
AS	Biology Unit 1	SBY1	15%	90	72	63	54	45	36
AS	Biology Unit 2	SBY2	15%	90	72	63	54	45	36
AS	Biology Unit 3	SBY3	10%	60	48	42	36	30	24
AS	Business Studies Unit 1	SBU1	20%	80	64	56	48	40	32
AS	Business Studies Unit 2	SBU2	20%	80	64	56	48	40	32
AS	Chemistry Unit 1	SCH1	16%	96	77	68	58	48	39
AS	Chemistry Unit 2	SCH2	16%	96	77	68	58	48	39
AS	Chemistry Unit 3	SCH3	8%	48	39	34	29	24	20
AS	Digital Technology Unit 1	SDT1	20%	80	64	56	48	40	32
AS	Digital Technology Unit 2	SDT2	20%	80	64	56	48	40	32
AS	Economics Unit 1	SEC1	20%	80	64	56	48	40	32
AS	Economics Unit 2	SEC2	20%	80	64	56	48	40	32
AS	English Literature Unit 1	SEL1	24%	96	77	68	58	48	39
AS	English Literature Unit 2	SEL2	16%	64	52	45	39	32	26
AS	Environmental Technology Unit 1	SET1	20%	80	64	56	48	40	32
AS	Environmental Technology Unit 2	SET2	20%	80	64	56	48	40	32
AS	French Unit 1	SFR1	12%	60	48	42	36	30	24
AS	French Unit 2	SFR2	16%	80	64	56	48	40	32
AS	French Unit 3	SFR3	12%	60	48	42	36	30	24
AS	Geography Unit 1	SGG1	16%	80	64	56	48	40	32
AS	Geography Unit 2	SGG2	16%	80	64	56	48	40	32
AS	Geography Unit 3	SGG3	8%	40	32	28	24	20	16
AS	German Unit 1	SGM1	12%	60	48	42	36	30	24
AS	German Unit 2	SGM2	16%	80	64	56	48	40	32
AS	German Unit 3	SGM3	12%	60	48	42	36	30	24
AS	Government & Politics Unit 1	SGP1	16%	64	52	45	39	32	26
AS	Government & Politics Unit 2	SGP2	24%	96	77	68	58	48	39



**AS Unit Uniform Mark Boundaries revised specifications: Summer 2017**  
(AS units contribute 40% of total A Level uniform mark)

Level	Subject and Unit	Unit Code	Unit Weighting	Maximum Uniform Mark	UMS Grade Boundaries				
					A	B	C	D	E
AS	Health & Social Care Unit 1	SHC1	5%	60	48	42	36	30	24
AS	Health & Social Care Unit 2	SHC2	5%	60	48	42	36	30	24
AS	Health & Social Care Unit 3	SHC3	10%	120	96	84	72	60	48
AS	Health & Social Care Unit 4	SHC4	5%	60	48	42	36	30	24
AS	Health & Social Care Unit 5	SHC5	10%	120	96	84	72	60	48
AS	Health & Social Care Unit 6	SHC6	5%	60	48	42	36	30	24
AS	Health & Social Care Unit 7	SHC7	10%	120	96	84	72	60	48
AS	History Unit 1	SHY1 Opts 1 to 5	20%	60	48	42	36	30	24
AS	History Unit 2	SHY2 Opts 1 to 6	20%	60	48	42	36	30	24
AS	History of Art Unit 1	SHA1	20%	80	64	56	48	40	32
AS	History of Art Unit 2	SHA2	20%	80	64	56	48	40	32
AS	Irish Unit 1	SIR1	12.0%	60	48	42	36	30	24
AS	Irish Unit 2	SIR2	16.0%	80	64	56	48	40	32
AS	Irish Unit 3	SIR3	12.0%	60	48	42	36	30	24
AS	Journalism Unit 1	SJR1	16%	64	52	45	39	32	26
AS	Journalism Unit 2	SJR2	24%	96	77	68	58	48	39
AS	Life & Health Sciences Unit 1	SZ01	6.67%	80	64	56	48	40	32
AS	Life & Health Sciences Unit 2	SZ02	6.67%	80	64	56	48	40	32
AS	Life & Health Sciences Unit 3	SZ03	6.67%	80	64	56	48	40	32
AS	Life & Health Sciences Unit 4	SZ04	6.67%	80	64	56	48	40	32
AS	Life & Health Sciences Unit 5	SZ05	6.67%	80	64	56	48	40	32
AS	Life & Health Sciences Unit 6	SZ06	6.67%	80	64	56	48	40	32
AS	Moving Image Arts Unit 1	SMX1	24%	96	77	68	58	48	39
AS	Moving Image Arts Unit 2	SMX2	16%	64	52	45	39	32	26
AS	Music Unit 1	SMU1	13%	78	63	55	47	39	32
AS	Music Unit 2	SMU2 Opts A to B	13%	78	63	55	47	39	32
AS	Music Unit 3	SMU3	14%	84	68	59	51	42	34



 Rewarding Learning		AS Unit Uniform Mark Boundaries revised specifications: Summer 2017 (AS units contribute 40% of total A Level uniform mark)							
Level	Subject and Unit	Unit Code	Unit Weighting	Maximum Uniform Mark	UMS Grade Boundaries				
					A	B	C	D	E
AS	Nutrition and Food Science Unit 1	SNF1	20%	80	64	56	48	40	32
AS	Nutrition and Food Science Unit 2	SNF2	20%	80	64	56	48	40	32
AS	Performing Arts Unit 1	SPA1	24%	96	77	68	58	48	39
AS	Performing Arts Unit 2	SPA2	16%	64	52	45	39	32	26
AS	Physics Unit 1	SPH1	16%	96	77	68	58	48	39
AS	Physics Unit 2	SPH2	16%	96	77	68	58	48	39
AS	Physics Unit 3	SPH3	8%	48	39	34	29	24	20
AS	Religious Studies Units 1 to 8 *	SRE1 to SRE8	20%	80	64	56	48	40	32
AS	Software Systems Development Unit 1	SDV1	20%	80	64	56	48	40	32
AS	Software Systems Development Unit 2	SDV2	20%	80	64	56	48	40	32
AS	Spanish Unit 1	SEP1	12%	60	48	42	36	30	24
AS	Spanish Unit 2	SEP2	16%	80	64	56	48	40	32
AS	Spanish Unit 3	SEP3	12%	60	48	42	36	30	24
AS	Sports Science Unit 1	SAL1	24%	96	77	68	58	48	39
AS	Sports Science Unit 2	SAL2	16%	64	52	45	39	32	26
AS	Technology & Design Unit 1	STE1 Opts A, B & C	20%	80	64	56	48	40	32
AS	Technology & Design Unit 2	STE2	20%	80	64	56	48	40	32
AS	Applied Business Unit 1	SAB1	6.67%	80	64	56	48	40	32
AS	Applied Business Unit 2	SAB2	6.67%	80	64	56	48	40	32
AS	Applied Business Unit 3	SAB3	6.67%	80	64	56	48	40	32
AS	Applied Business Unit 4	SAB4	6.67%	80	64	56	48	40	32
AS	Applied Business Unit 5	SAB5	6.67%	80	64	56	48	40	32
AS	Applied Business Unit 6	SAB6	6.67%	80	64	56	48	40	32
AS	Applied ICT Unit 1	SAJ1	6.67%	80	64	56	48	40	32
AS	Applied ICT Unit 2	SAJ2	6.67%	80	64	56	48	40	32
AS	Applied ICT Unit 3	SAJ3	6.67%	80	64	56	48	40	32
AS	Applied ICT Unit 4	SAJ4	6.67%	80	64	56	48	40	32
AS	Applied ICT Unit 5	SAJ5	6.67%	80	64	56	48	40	32
AS	Applied ICT Unit 6	SAJ6	6.67%	80	64	56	48	40	32

\* AS Religious Studies - candidates must complete two units from SRE1 to SRE8.

**GCE Legacy Specifications**  
**Subject Level Uniform Mark Grade Boundaries: Summer 2017**  
 (AS and A2 units both worth 50% of total A Level)

GCE 4 unit subjects AS Max Uniform Marks: 200 A2 Level Max Uniform Marks: 400		
Grade	Uniform Mark Boundaries	
	AS	A2 Level
A	160	320
B	140	280
C	120	240
D	100	200
E	80	160
Subjects:		
AS & A2 Art and Design	AS & A2 ICT	
AS & A2 Business Studies	AS & A2 Irish	
AS & A2 Economics	AS & A2 Journalism	
AS & A2 English Literature	AS & A2 Moving Image Arts	
AS & A2 Environmental Technology	AS & A2 Music	
AS & A2 French	AS & A2 Performing Arts	
AS & A2 Geography	AS & A2 Religious Studies	
AS & A2 German	AS & A2 Spanish	
AS & A2 Government and Politics	AS & A2 Software Systems	
AS & A2 History	AS & A2 Sports Science	
AS & A2 History of Art	AS & A2 Technology and Design	
AS & A2 Home Economics		

GCE 6 unit subjects AS Max Uniform Marks: 300 A2 Level Max Uniform Marks: 600		
Grade	Uniform Mark Boundaries	
	AS	A2 Level
A	240	480
B	210	420
C	180	360
D	150	300
E	120	240
Subjects:		
AS & A2 Biology		
AS & A2 Chemistry		
AS & A2 Physics		
AS & A2 Mathematics		
AS & A2 Further Mathematics		
AS & A2 Applied Business (Single Award)		
AS & A2 Applied Health & Social Care (Single Award)		
AS & A2 Applied ICT (Single Award)		

GCE Double Award 12 unit subjects AS Max Uniform Marks: 600 A2 Level Max Uniform Marks: 1200		
Grade	Uniform Mark Boundaries	
	AS	A2 Level
AA	480	960
AB	450	900
BB	420	840
BC	390	780
CC	360	720
CD	330	660
DD	300	600
DE	270	540
EE	240	480
Subjects:		
AS & A2 Applied Business (Double Award)		
AS & A2 Applied Health & Social Care (Double Award)		
AS & A2 Applied ICT (Double Award)		

Please note - Summer 2017 is the last award of AS legacy specification units with the exception of AS Mathematics and Further Mathematics.





Rewarding Learning

**Uniform Mark Boundaries for legacy AS & A2 specifications: Summer 2017**  
(last award of AS legacy specification units)

ULevel	Subject and Unit	Unit Code	Unit Weighting	Maximum Uniform Mark	UMS Grade Boundaries				
					A	B	C	D	E
AS	Art and Design Unit 1	AA11	30%	120	96	84	72	60	48
AS	Art and Design Unit 2	AA12	20%	80	64	56	48	40	32
A2	Art and Design Unit 1	AA21	30%	120	96	84	72	60	48
A2	Art and Design Unit 2	AA22	20%	80	64	56	48	40	32
AS	Biology Unit 1	AB11	20%	120	96	84	72	60	48
AS	Biology Unit 2	AB12	20%	120	96	84	72	60	48
AS	Biology Unit 3	AB13	10%	60	48	42	36	30	24
A2	Biology Unit 1	AB21	20%	120	96	84	72	60	48
A2	Biology Unit 2	AB22	20%	120	96	84	72	60	48
A2	Biology Unit 3	AB23	10%	60	48	42	36	30	24
AS	Business Studies Unit 1	AT11	25%	100	80	70	60	50	40
AS	Business Studies Unit 2	AT12	25%	100	80	70	60	50	40
A2	Business Studies Unit 1	AT21	25%	100	80	70	60	50	40
A2	Business Studies Unit 2	AT22	25%	100	80	70	60	50	40
AS	Chemistry Unit 1	AC11	17.5%	105	84	74	63	53	42
AS	Chemistry Unit 2	AC12	17.5%	105	84	74	63	53	42
AS	Chemistry Unit 3 (Practical)	AC13	15%	90	72	63	54	45	36
A2	Chemistry Unit 1	AC21	20%	120	96	84	72	60	48
A2	Chemistry Unit 2	AC22	20%	120	96	84	72	60	48
A2	Chemistry Unit 3 (Practical)	AC23	10%	60	48	42	36	30	24
AS	Economics Unit 1	AE11	25%	100	80	70	60	50	40
AS	Economics Unit 2	AE12	25%	100	80	70	60	50	40
A2	Economics Unit 1	AE21	25%	100	80	70	60	50	40
A2	Economics Unit 2	AE22	25%	100	80	70	60	50	40
AS	English Literature Unit 1	AL11	20%	80	64	56	48	40	32
AS	English Literature Unit 2	AL12	30%	120	96	84	72	60	48
A2	English Literature Unit 1	AL21	25%	100	80	70	60	50	40
A2	English Literature Unit 2	AL22	25%	100	80	70	60	50	40
AS	Environmental Technology Unit 1	A1E1	25%	100	80	70	60	50	40
AS	Environmental Technology Unit 2	A1E2	25%	100	80	70	60	50	40
A2	Environmental Technology Unit 1	A2EA	25%	100	80	70	60	50	40
A2	Environmental Technology Unit 2	A2EB	25%	100	80	70	60	50	40



**Uniform Mark Boundaries for legacy AS & A2 specifications: Summer 2017**  
(last award of AS legacy specification units)

ULevel	Subject and Unit	Unit Code	Unit Weighting	Maximum Uniform Mark	UMS Grade Boundaries				
					A	B	C	D	E
AS	French Unit 1	AF11	17.5%	70	56	49	42	35	28
AS	French Unit 2	AF12	32.5%	130	104	91	78	65	52
A2	French Unit 1	AF21	17.5%	70	56	49	42	35	28
A2	French Unit 2	AF22	32.5%	130	104	91	78	65	52
AS	Geography Unit 1	AG11	25%	100	80	70	60	50	40
AS	Geography Unit 2	AG12	25%	100	80	70	60	50	40
A2	Geography Unit 1	AG21	25%	100	80	70	60	50	40
A2	Geography Unit 2	AG22	25%	100	80	70	60	50	40
AS	German Unit 1	AJ11	17.5%	70	56	49	42	35	28
AS	German Unit 2	AJ12	32.5%	130	104	91	78	65	52
A2	German Unit 1	AJ21	17.5%	70	56	49	42	35	28
A2	German Unit 2	AJ22	32.5%	130	104	91	78	65	52
AS	Government & Politics Unit 1	AQ11	20%	80	64	56	48	40	32
AS	Government & Politics Unit 2	AQ12	30%	120	96	84	72	60	48
A2	Government & Politics Unit 1	AQ21 Opts A & B	30%	120	96	84	72	60	48
A2	Government & Politics Unit 2	AQ22 Opts A & B	20%	80	64	56	48	40	32
AS	History Unit 1	AH11 Opts 1 to 5	25%	100	80	70	60	50	40
AS	History Unit 2	AH12 Opts 1 to 6	25%	100	80	70	60	50	40
A2	History Unit 1	AH21 Opts 1 to 5	20%	80	64	56	48	40	32
A2	History Unit 2	AH22 Opts 1 to 4	30%	120	96	84	72	60	48
AS	History of Art Unit 1	AD11	25%	100	80	70	60	50	40
AS	History of Art Unit 2	AD12	25%	100	80	70	60	50	40
A2	History of Art Unit 1	AD21	25%	100	80	70	60	50	40
A2	History of Art Unit 2	AD22	25%	100	80	70	60	50	40
AS	Home Economics Unit 1	AN11	25%	100	80	70	60	50	40
AS	Home Economics Unit 2	AN12	25%	100	80	70	60	50	40
A2	Home Economics Unit 1	AN21	25%	100	80	70	60	50	40
A2	Home Economics Unit 2	AN22	25%	100	80	70	60	50	40



**Uniform Mark Boundaries for legacy AS & A2 specifications: Summer 2017**  
(last award of AS legacy specification units)

ULevel	Subject and Unit	Unit Code	Unit Weighting	Maximum Uniform Mark	UMS Grade Boundaries				
					A	B	C	D	E
AS	ICT Unit 1	AP11	30%	120	96	84	72	60	48
AS	ICT Unit 2	AP12	20%	80	64	56	48	40	32
A2	ICT Unit 1	AP21	30%	120	96	84	72	60	48
A2	ICT Unit 2	AP22	20%	80	64	56	48	40	32
AS	Irish Unit 1	AI11	17.5%	70	56	49	42	35	28
AS	Irish Unit 2	AI12	32.5%	130	104	91	78	65	52
A2	Irish Unit 1	AI21	17.5%	70	56	49	42	35	28
A2	Irish Unit 2	AI22	32.5%	130	104	91	78	65	52
AS	Journalism in the Media & Communications Industry Unit 1	A1J1	20%	80	64	56	48	40	32
AS	Journalism in the Media & Communications Industry Unit 2	A1J2	30%	120	96	84	72	60	48
A2	Journalism in the Media & Communications Industry Unit 1	A2JA	20%	80	64	56	48	40	32
A2	Journalism in the Media & Communications Industry Unit 2	A2JB	30%	120	96	84	72	60	48
AS/A2	Mathematics Core Unit 1	AMC1	16.7%	100	80	70	60	50	40
AS/A2	Mathematics Core Unit 2	AMC2	16.7%	100	80	70	60	50	40
A2	Mathematics Core Unit 3	AMC3	16.7%	100	80	70	60	50	40
A2	Mathematics Core Unit 4	AMC4	16.7%	100	80	70	60	50	40
AS/A2	Further Maths Unit 1	AMF1	16.7%	100	80	70	60	50	40
A2	Further Maths Unit 2	AMF2	16.7%	100	80	70	60	50	40
A2	Further Maths Unit 3	AMF3	16.7%	100	80	70	60	50	40
AS/A2	Maths Mechanics Unit 1	AMM1	16.7%	100	80	70	60	50	40
A2	Maths Mechanics Unit 2	AMM2	16.7%	100	80	70	60	50	40
A2	Maths Mechanics Unit 3	AMM3	16.7%	100	80	70	60	50	40
A2	Maths Mechanics Unit 4	AMM4	16.7%	100	80	70	60	50	40
AS/A2	Maths Statistics Unit 1	AMS1	16.7%	100	80	70	60	50	40
A2	Maths Statistics Unit 2	AMS4	16.7%	100	80	70	60	50	40
AS	Music Unit 1	AU11 Opts A to D	32%	128	102	90	77	64	51
AS	Music Unit 2	AU12	18%	72	58	50	43	36	29
A2	Music Unit 1	AU21 Opts A to D	30%	120	96	84	72	60	48
A2	Music Unit 2	AU22	20%	80	64	56	48	40	32



**Uniform Mark Boundaries for legacy AS & A2 specifications: Summer 2017**  
(last award of AS legacy specification units)

ULevel	Subject and Unit	Unit Code	Unit Weighting	Maximum Uniform Mark	UMS Grade Boundaries				
					A	B	C	D	E
AS	Moving Image Arts Unit 1	AX11	35%	140	112	98	84	70	56
AS	Moving Image Arts Unit 2	AX12	15%	60	48	42	36	30	24
A2	Moving Image Arts Unit 1	AX21	35%	140	112	98	84	70	56
A2	Moving Image Arts Unit 2	AX22	15%	60	48	42	36	30	24
AS	Performing Arts Unit 1	A1P1	30%	120	96	84	72	60	48
AS	Performing Arts Unit 2	A1P2	20%	80	64	56	48	40	32
A2	Performing Arts Unit 1	A2PA	30%	120	96	84	72	60	48
A2	Performing Arts Unit 2	A2PB	20%	80	64	56	48	40	32
AS	Physics Unit 1	AY11	18.5%	111	89	78	67	56	44
AS	Physics Unit 2	AY12	18.5%	111	89	78	67	56	44
AS	Physics Unit 3 (Practical)	AY13 A	13%	78	62	55	47	39	31
A2	Physics Unit 1	AY21	18.5%	111	89	78	67	56	44
A2	Physics Unit 2	AY22	18.5%	111	89	78	67	56	44
A2	Physics Unit 3 (Practical)	AY23 A	13%	78	62	55	47	39	31
A2	Physics Unit 3 (Practical Alt)	AY23 B	13%	78	62	55	47	39	31
AS	Religious Studies Units 1 to 8 *	AR11 to AR18	25%	100	80	70	60	50	40
A2	Religious Studies Units 1 to 8 *	AR21 to AR28	25%	100	80	70	60	50	40
AS	Spanish Unit 1	AK11	17.5%	70	56	49	42	35	28
AS	Spanish Unit 2	AK12	32.5%	130	104	91	78	65	52
A2	Spanish Unit 1	AK21	17.5%	70	56	49	42	35	28
A2	Spanish Unit 2	AK22	32.5%	130	104	91	78	65	52
AS	Software Systems Development Unit 1	A1S1	25%	100	80	70	60	50	40
AS	Software Systems Development Unit 2	A1S2	25%	100	80	70	60	50	40
A2	Software Systems Development Unit 1	A2S1	25%	100	80	70	60	50	40
A2	Software Systems Development Unit 2	A2S2	25%	100	80	70	60	50	40



**Uniform Mark Boundaries for legacy AS & A2 specifications: Summer 2017**  
(last award of AS legacy specification units)

ULevel	Subject and Unit	Unit Code	Unit Weighting	Maximum Uniform Mark	UMS Grade Boundaries				
					A	B	C	D	E
AS	Sports Science Unit 1	A1L1	30%	120	96	84	72	60	48
AS	Sports Science Unit 2	A1L2	20%	80	64	56	48	40	32
A2	Sports Science Unit 1	A2LA	30%	120	96	84	72	60	48
A2	Sports Science Unit 2	A2LB	20%	80	64	56	48	40	32
AS	Technology & Design Unit 1	AV11 Opts A, B & C	25%	100	80	70	60	50	40
AS	Technology & Design Unit 2	AV12	25%	100	80	70	60	50	40
A2	Technology & Design Unit 1	AV21 Opts A, B & C	25%	100	80	70	60	50	40
A2	Technology & Design Unit 2	AV22	25%	100	80	70	60	50	40
AS	Applied Business Unit 1	A3B1	16.7%	100	80	70	60	50	40
AS	Applied Business Unit 2	A3B2	16.7%	100	80	70	60	50	40
AS	Applied Business Unit 3	A3B3	16.7%	100	80	70	60	50	40
AS	Applied Business Unit 4	A3B4	16.7%	100	80	70	60	50	40
AS	Applied Business Unit 5	A3B5	16.7%	100	80	70	60	50	40
AS	Applied Business Unit 6	A3B6	16.7%	100	80	70	60	50	40
A2	Applied Business Unit 7	A6B1	16.7%	100	80	70	60	50	40
A2	Applied Business Unit 8	A6B2	16.7%	100	80	70	60	50	40
A2	Applied Business Unit 9	A6B3	16.7%	100	80	70	60	50	40
A2	Applied Business Unit 10	A6B4	16.7%	100	80	70	60	50	40
A2	Applied Business Unit 11	A6B5	16.7%	100	80	70	60	50	40
A2	Applied Business Unit 12	A6B6	16.7%	100	80	70	60	50	40
AS	Applied Health & Social Care Unit 1	A3H1	16.7%	100	80	70	60	50	40
AS	Applied Health & Social Care Unit 2	A3H2	16.7%	100	80	70	60	50	40
AS	Applied Health & Social Care Unit 3	A3H3	16.7%	100	80	70	60	50	40
AS	Applied Health & Social Care Unit 4	A3H4	16.7%	100	80	70	60	50	40
AS	Applied Health & Social Care Unit 5	A3H5	16.7%	100	80	70	60	50	40
AS	Applied Health & Social Care Unit 6	A3H6	16.7%	100	80	70	60	50	40
AS	Applied Health & Social Care Unit 14	A3H8	16.7%	100	80	70	60	50	40





**Uniform Mark Boundaries for legacy AS & A2 specifications: Summer 2017**  
(last award of AS legacy specification units)

ULevel	Subject and Unit	Unit Code	Unit Weighting	Maximum Uniform Mark	UMS Grade Boundaries				
					A	B	C	D	E
A2	Applied Health & Social Care Unit 7	A6H1	16.7%	100	80	70	60	50	40
A2	Applied Health & Social Care Unit 8	A6H2	16.7%	100	80	70	60	50	40
A2	Applied Health & Social Care Unit 9	A6H3	16.7%	100	80	70	60	50	40
A2	Applied Health & Social Care Unit 10	A6H4	16.7%	100	80	70	60	50	40
A2	Applied Health & Social Care Unit 11	A6H5	16.7%	100	80	70	60	50	40
A2	Applied Health & Social Care Unit 12	A6H6	16.7%	100	80	70	60	50	40
A2	Applied Health & Social Care Unit 15	A6H7	16.7%	100	80	70	60	50	40
AS	Applied ICT Unit 1	A3J1	16.7%	100	80	70	60	50	40
AS	Applied ICT Unit 2	A3J2	16.7%	100	80	70	60	50	40
AS	Applied ICT Unit 3	A3J3	16.7%	100	80	70	60	50	40
AS	Applied ICT Unit 4	A3J4	16.7%	100	80	70	60	50	40
AS	Applied ICT Unit 5	A3J5	16.7%	100	80	70	60	50	40
AS	Applied ICT Unit 6	A3J6	16.7%	100	80	70	60	50	40
A2	Applied ICT Unit 7	A6J1	16.7%	100	80	70	60	50	40
A2	Applied ICT Unit 8	A6J2	16.7%	100	80	70	60	50	40
A2	Applied ICT Unit 9	A6J3	16.7%	100	80	70	60	50	40
A2	Applied ICT Unit 10	A6J4	16.7%	100	80	70	60	50	40
A2	Applied ICT Unit 11	A6J5	16.7%	100	80	70	60	50	40
A2	Applied ICT Unit 12	A6J6	16.7%	100	80	70	60	50	40
A2	Applied ICT Unit 13	A6J7	16.7%	100	80	70	60	50	40
A2	Applied ICT Unit 14	A6J8	16.7%	100	80	70	60	50	40

\* AS and A2 Religious Studies - candidates must complete two units from AR11 to AR18 and two units from AR21 to AR28.

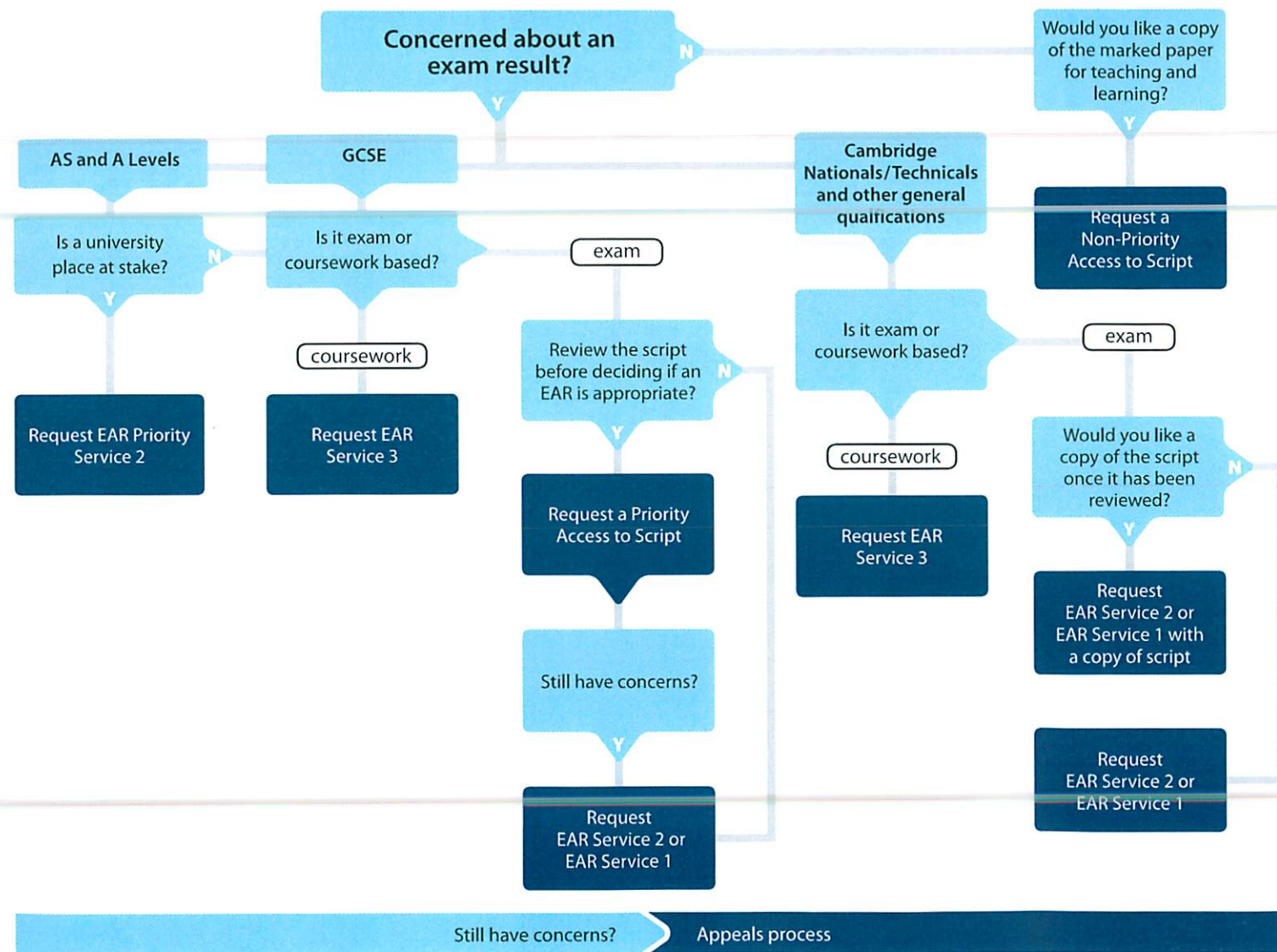


# OCR's post-results services and fees: June 2017 series

There are a number of options available if you have a concern about a result.

Here's a quick guide to your main options: requesting one of our reviews of marking (*enquiries about results* – EARs) or getting hold of a copy of a marked exam paper (*access to scripts*). If you still have a concern after this, we offer an appeals service. Students should speak to a teacher or exams officer at their school or college about post-results services.

**Please note: All post-results services must be requested via a school or college.**



## Our Services Explained

### EAR Service 1

by 21/09/17

**Clerical re-check (£16.40)**

of all procedures leading to the issue of a result.

### EAR Service 2

by 21/09/17

**Post-results mark review (£45.60)**

To ensure the agreed mark scheme has been applied correctly. If you are concerned about a group of candidates, you should submit requests for all candidates you believe are affected.

### EAR Priority Service 2

by 24/08/17

**Post-results mark review (£56.30)**

As for Service 2 but only available for AS and A Level qualifications in the June series.

### EAR Service 2a and 2b

by 21/09/17

For specific GCSE, AS and A Level exams for which access to scripts is not available, such as speaking tests, see [www.ocr.org.uk/ear2](http://www.ocr.org.uk/ear2).

### EAR Service 3

by 21/09/17

**Post-results moderation review (£212)**

Review of the original moderation to ensure assessment criteria have been fairly, reliably and consistently applied.

### Access to scripts

AS/A Level by 24/08/17

GCSE by 31/08/17

**Priority (£11.40)**

A copy of the original marked script to help you decide whether to request an enquiry about results

**Non-Priority for teaching and learning (£11)** As priority but not guaranteed to arrive before the enquiries window closes

by 28/09/17

### Copy of script

A copy of the reviewed script to be delivered after the review has been completed. (£11.40)

### Missing and incomplete results (MIR)

An investigation to check if a result indicator – no result (X), partial absence (#) or pending (Q) – has been wrongly applied.

### Late certification

Request when a certification entry has not previously been made for a unitised qualification.

[www.ocr.org.uk/prs](http://www.ocr.org.uk/prs)

For further details of services, fees and charging policy, visit [www.ocr.org.uk/prs](http://www.ocr.org.uk/prs)

**OCR**  
Oxford Cambridge and RSA



## Post-Results Services

For exam series between September 2016 and August 2017

Service	Qualification type/level	Service no	Cost
Clerical check (per component, unit or module)	Level 1 and 2	1	£8.05
	Level 3	1	£16.10
Priority review of marking	Level 3 only	2P	£50.30
Review of marking	Level 3	2	£42.25
	Level 1 and 2	2	£36.50
Copy of reviewed or clerically checked script	Level 1, 2 and 3	S	£13.95
Review of moderation (if the school/college cohort consists of five or fewer students, the re-moderation fee will be half the normal rate)	Level 3	3	£244.55
	Level 1 and 2	3	£219.45
Access to scripts without a review or clerical check – photocopy	Level 3		£13.95
Access to scripts without a review or clerical check – original	Level 1, 2 and 3		£11.00
Access to scripts STMS/DMS for foreign languages (MFL)	A-level/GCSE only		£4.55
Access to scripts recordings for foreign languages (MFL) – teacher led	A-level/GCSE only		£22.20
Access to scripts recordings for foreign languages (MFL) – visiting examiner	A-level only		£33.30
Speaking test report fees for foreign languages (MFL) (per component per student)	A-level only		£66.80
	GCSE only		£48.95
Appeals against decisions (only following enquiries about results)	Stage 1	Level 1, 2 and 3	£108.60
	Stage 2	Level 1, 2 and 3	£186.15

Level 1 and 2 qualifications includes: **GCSE**, AQA Certificate (level 1 and 2), ELC, FCSE, Functional Skills, FSMQ foundation and higher levels, level 1 and 2 projects.

Level 3 qualifications includes: **AS and A-level**, AQA Certificate (level 3), FSMQ advanced level and level 3 extended project, Tech levels and Applied Generals.



Title	Type	Unit/Comp	Award	Name	Max	Grade (UMS/Points) Boundaries					
Accounting	GCE	ACCN1		Introduction to Financial Accounting	100 UMS	A(80)	B(70)	C(60)	D(50)	E(40)	
		ACCN2		Further Aspects of Financial Accounting	100 UMS	A(80)	B(70)	C(60)	D(50)	E(40)	
		ACCN3		Further Aspects of Management Accounting	100 UMS	A(80)	B(70)	C(60)	D(50)	E(40)	
		ACCN4		Financial and Management Accounting	100 UMS	A(80)	B(70)	C(60)	D(50)	E(40)	
			1121	AS Award	200 UMS	A(160)	B(140)	C(120)	D(100)	E(80)	
			2121	Advanced Award	400 UMS	A(320)	B(280)	C(240)	D(200)	E(160)	

Title	Type	Unit/Comp	Award	Name	Max	Grade (UMS/Points) Boundaries					
Media Studies	GCE	MEST1		Investigating Media	100 UMS	A(80)	B(70)	C(60)	D(50)	E(40)	
		MEST2		Creating Media	100 UMS	A(80)	B(70)	C(60)	D(50)	E(40)	
		MEST3		Critical Perspectives	100 UMS	A(80)	B(70)	C(60)	D(50)	E(40)	
		MEST4		Media: Research and Production	100 UMS	A(80)	B(70)	C(60)	D(50)	E(40)	
			1571	AS Award	200 UMS	A(160)	B(140)	C(120)	D(100)	E(80)	
			2571	Advanced Award	400 UMS	A(320)	B(280)	C(240)	D(200)	E(160)	

Spanish	GCE	SPAN1		AS Listening, Reading and Writing	140 UMS	A(112)	B(98)	C(84)	D(70)	E(56)	
		SPA2T		Spanish: Speaking Test	60 UMS	A(48)	B(42)	C(36)	D(30)	E(24)	
		SPA2V		Spanish: Speaking Test	60 UMS	A(48)	B(42)	C(36)	D(30)	E(24)	
		SPAN3		Advanced Listening, Reading and Writing	140 UMS	A(112)	B(98)	C(84)	D(70)	E(56)	
		SPA4T		Spanish: Speaking Test	60 UMS	A(48)	B(42)	C(36)	D(30)	E(24)	
		SPA4V		Spanish: Speaking Test	60 UMS	A(48)	B(42)	C(36)	D(30)	E(24)	
			1696	AS Award	200 UMS	A(160)	B(140)	C(120)	D(100)	E(80)	
			2696	Advanced Award	400 UMS	A(320)	B(280)	C(240)	D(200)	E(160)	

## Post-results services fees (from August 2017)

Services	Notes	Edexcel Level 1 and Level 2 components/units GCSE Certificate/International GCSE Edexcel Awards in mathematics Digital Applications (CiDA/DiDA) Functional Skills	Edexcel Level 3 components/units AEA AS and A level Edexcel Awards in mathematics	BTEC (NQF) components/units BTEC Level 1/Level 2 Firsts (NQF)	BTEC (NQF) components/units BTEC Level 3 (NQF)
Service 1 — clerical Check	Fee per candidate per paper/unit	£11.10	£11.10	£11.10	£11.10
* Service 2 —Post-results review of marking	Fee per candidate per paper/unit	£35.90	£41.70	£35.90	£35.90
* Service 2P — Priority Post-results review of marking	Fee per candidate per paper/unit	£41.25	£49.70	NA	£49.70
ATS - original script	Fee per candidate per paper/unit	**Free	**Free	**Free	**Free
ATS - photocopy Script	Fee per candidate per paper/unit	**Free	**Free	**Free	**Free
ATS – post EAR photocopy script	Fee per candidate per paper/unit	£11.10	£11.10	£11.10	£11.10

To find out which services are available for each component/unit, please visit <http://qualifications.pearson.com/en/support/support-topics/results-certification/post-results-services.html>

\*\* Following the launch of our self-service portal for access to scripts, all ATS requests other than the post-EAR photocopy script request will be free of charge from 2017 onwards.



## Edexcel

Physical Education										
AS unit grade boundaries			Max Mark	a*	a	b	c	d	e	u
6PE01	Participation in Sport and Recreation	Raw	90		58	54	50	46	42	0
		UMS	100		80	70	60	50	40	0
6PE02	The Critical Sports Performer	Raw	90		84	77	70	63	57	0
		UMS	100		80	70	60	50	40	0
A2 unit grade boundaries			Max Mark	a*	a	b	c	d	e	u
6PE03	Preparation for Optimum Sports	Raw	90	59	55	51	47	43	40	0
		UMS	100	90	80	70	60	50	40	0
6PE04	The Developing Sports Performer	Raw	90	85	81	73	65	57	50	0
		UMS	100	90	80	70	60	50	40	0
Cash-in grade boundaries			Max Mark	A*	A	B	C	D	E	U
8PE01	AS Physical Education	UMS	200		160	140	120	100	80	0
9PE01	A level Physical Education	UMS	400		320	280	240	200	160	0